

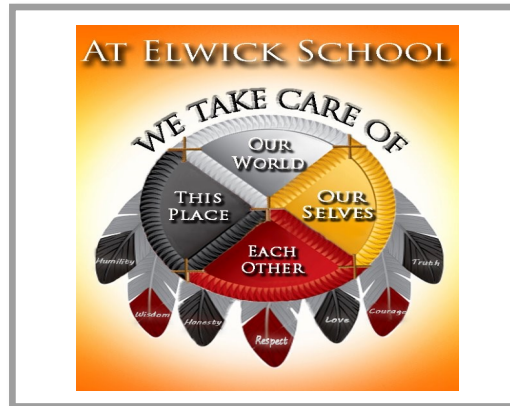
December 2017

Elwick Community School

30 Maberley Road, Winnipeg MB R2P 0E2

Phone: 204-633-5641 **Website:** www.7oaks.org/school/elwick

Principal: Bobbi-Lynn Haegeman **Vice-Principal:** Jenny Bilodeau



Important Dates to Remember

December 6th: Sistema Winter Concert

December 8th: Holiday Feast

December 13th: K-3 Winter Concert

December 25—January 6th: Winter Break

January 8th: Classes Resume

Attendance Call Back

If your child is going to be away from school due to a medical appointment, illness, or any other reason we ask that you call the school office and speak to one of the secretaries any time after 8:00am and before 1:00pm.

204-633-5641

If we do not hear from you and your child is not in attendance, we will give you a call to make sure they are safe.

Sistema

November was a fantastic month of music making. The Vivaldi group is now on their real instruments and they are learning how to play as an orchestra. The Mozart group is learning how to play two and three part harmonies together. The Beethoven group has been busy representing Sistema and the Elwick community at events around the city. They sang and played at the St John's College Sistema Fundraiser on November 19th and sang alongside the Camerata Nova Singers at the Crescent Fort Rouge United Church on November 25th.

We have been very busy getting ready for our winter concert coming up in December. This year our Sistema Winter Concert will be held at the CCFM (Centre Culturel Franco-Manitobain, 340 Provencher Boulevard) on December 6th from 6:30-7:30. The students are all very excited to show their families what they have been up to since September. We will be performing with our Sistema sister-school King Edward Community School. There will be 160 students playing violin, viola, cello, bass, trumpet, trombone, flute and clarinet!



Sistema Announcement

We would like to acknowledge a very special event that happened at the beginning of the month. The success of Sistema depends on gifts in many forms. We have Elwick families and volunteers from the community who donate their time and energy, we have support from federal, provincial and private grants and we also receive donations from private individuals.

This month Tannis Richardson and Michael Nozick both decided to give \$500,000.00 for a combined donation of \$1,000,000.00 to Sistema Winnipeg! That is the largest donation the WSO has ever received in its entire history. It shows how much people believe in what the students of Sistema and Elwick are doing every night after school. People from all over Winnipeg are noticing that something special is happening here. We are all proud and lucky to be a part of it.



December Sistema Calendar



Sunday Monday Tuesday Wednesday Thursday Friday Saturday

					1	2
3	4 Sistema going to KE	5	6 Sistema Winter Concert!	7	8	9
10 WSO Winter Concert	11	12	13 K-3 Concert No Sistema	14	15	16
17	18	19	20	21	22 Last Day of Sistema!	23
24	25	26	27	28	29	30
31						

Notes from the Music Room

Roselly Funk

“Without Music Life Would Bb” (unknown)

It's that time of year again when Elwick students give the gift of music! This year the grades K - 3 choir has been working hard practicing the songs for our winter concert. We will be spreading our winter holiday cheer on:

December 13, at 7 pm in the gym at Elwick School

Come, listen and watch as your children share beautiful songs with you, with the school and with the community.

Winter Concert: “When The Snow Falls”



Physical Education Report

Kim Schettler

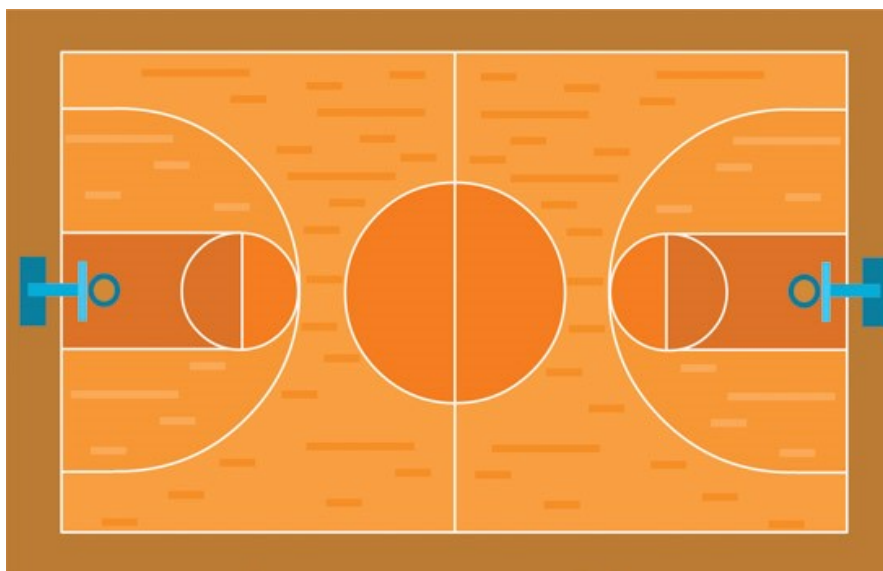
Middle Years:

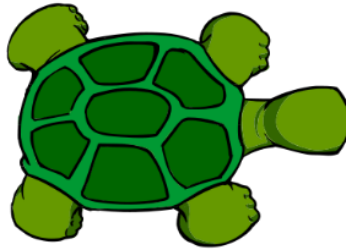
Our **Volleyball** season has come to an end. The girls really improved their skills this season through practices and after school tournaments. The grade 8 girls also had a chance to play their final tournament on November 20th at Red River Community College. Thank you to our coaches: Ms. Laird, Ms. Starr, and Ms. Thompson for their help with the teams.

Physical Education classes will be starting up with **basketball** skills and games in the gym. Sign ups for the Elwick Flames teams will begin shortly, please listen to the announcements for when this will take place. Games will begin after the winter break.

Intramurals continue at 12:25-12:50 for our grade 4-8 students.

***** Just a reminder to make sure that your child has their indoor runners for the gym. With the snow on the ground, the floor gets messy and slippery when students wear their boots. Thanks!**





ELWICK COMMUNITY ROOM PRESCHOOL PROGRAM
DECEMBER 2017

Our Parent/Caregiver and Child (birth to 6 years) Programs will take place on Wednesdays, from 1:00-3:00pm and Thursdays, from 9:00-10:30am. We will have play, special activities, Story Time, snack and coffee.

- | | |
|------------------------|--|
| Wednesday, December 6 | - Play and Story Time – Parent led |
| Thursday, December 7 | - Play and Story Time with Sonia today |
| Wednesday, December 13 | - Play and Story Time – Card making |
| Thursday, December 14 | - Play and Story Time – Card making |
| Wednesday, December 20 | - Play and Story Time – Holiday Party |
| Thursday, December 21 | - Program Cancelled Today |

The Community Room/Preschool Programs will start back after the Christmas break on Wednesday, January 10, 2018.



Roots of Empathy In Room Fourteen



The students of Room 14 are taking part in a very exciting program this year! As part of the Roots of Empathy program, baby Sawyer will be making monthly visits to Mr. Vaarmeyer's classroom. Sawyer is Mrs. Clarke's (staff member on maternity leave) new son and will be 4 months old in the beginning of December. We are so lucky to have Ms. Jenny Bilodeau and Ms. Donna Giesbrecht join us each visit to facilitate the program. During our first visit, the students learned about Sawyer and his current abilities (smiling, cooing, and lifting his head during tummy time).

Roots of Empathy is a program that helps teach students about the social and emotional needs of ourselves and others through the eyes of a baby. By learning about baby Sawyer and his needs, we are learning about how to take better care of the people around us too.

We are so excited to watch Sawyer grow each month....stay tuned for monthly updates!

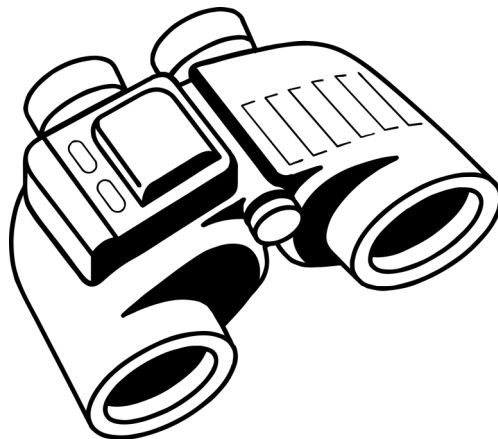
Ecological Education

Ms. Ballantyne

We weren't sure where we were going to go following our last inquiry. Some of our thoughts... *Were the learners interested in what is happening with Mother Nature now? Where did the Asian beetles go? What about the birds?* Or would the learners be interested in something completely new? Now that there is snow on the ground, would they want investigate that?

Ms. Jennilee, Mrs. Sanders, and I met to discuss where we would go next. We decided that we would head outside to see what the learners observed. We ventured out after a brief review of our last investigation/inquiry and a conversation about observing what is happening outside. *What will you see? What will you feel? What do you hear? Taste? Smell?* As we were exploring outside, some learners were engaged, whereas some looked a little lost. We came inside and had a 5 minute silent sketch where the learners were able to sketch some of their observations while outside. All of the learners were engaged with the silent sketch, even the two who did not make it outside. We were able to pull some language from the learners but we (teachers) felt as though it was not enough to get things going. The learners needed more tools to help guide their observations outside.

Again, we met and discussed how we could get the learners to be better at observing their surroundings. I remembered hearing about a professional development day that happened at Elwick while I was on maternity leave. The guest speaker had the staff pick a spot in the schoolyard, away from everyone else, and sit in silence for a given amount of time to observe what is happening around you (or something along this line). I also attended a professional development day with Gillian Judson, she had us use a similar exercise. We all went outside and stayed within a small area for about 5 minutes to focus only on what was happening around us. I thought that practising with this type of exercise might maybe help these learners become aware of what it happening around them.



Ecological Education Continued

I met with room 10 this morning to try this task and it was so successful! We first discussed what did not go well last time and what we were going to do differently this time. We discussed what to do if distractions arise...

- “If you’re talking, you can’t be listening.” –Lucas
- “Ignore what others are saying” – Rain
- “Use gentle hands.” – Sheldon

We planned to stick in our groups and form a circle, facing away from each other. Then, while standing in silence, observe our surroundings for two minutes. We discussed all the senses which would help us observe what is going on around us.

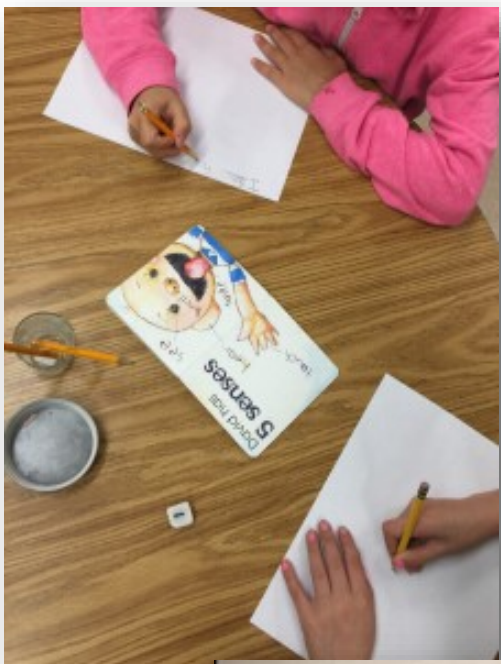
We split into three groups and all set out to a different part of the schoolyard. Each group observed in their circles for two minutes. Here are some pictures...



Ecological Education Continued

Once the two minutes was up, we gathered again inside to discuss our next attempt at a 5 minute silent sketch. Isabelle suggested listening to music while sketching. We also discussed using sketching lines (which are little lines that make up larger lines) vs regular drawing lines (solid continuous line) and how sketchers use sketching lines because it allows for easier sketching. Here are some of the examples of the sketches .

Ms. Jennilee, Mrs. Sanders, and myself reviewed our morning and celebrated it's success. The celebration quickly turned into next steps. We decided that the observations, sketches, and words tended to lean towards snow and coldness. Where can we go next? We started discussing heroic qualities and binary opposites (Judson, 2016) of snow. Gillian uses these ideas as a way of engaging the learners in any topic. What qualities does a hero have? Can snow be heroic? Where in the world has the most snow? Where is the coldest place on earth? We will begin these discussions next time we are together. Stay warm!



Elwick's Student Winter Feast

Friday, December 8th at 11:30am

All students will eat lunch at the school on this day.

Both A.M. and P.M. Kindergarten students will be at school in the morning, so P.M. Kindergarten students will not be at school in the afternoon on this day.



Contact Information

It is very important that we have updated contact information for your child.

If you have moved or had a change of phone number, please let the school know at 204-633-5641